

Technology, that sets standards

Product Profile



Slurry / Absorber Recirculation Pump manufactured for
NTPC Telangana 2 x 800 MW FGD Plant, Model : KWP 900.

Our manufacturing network



Energy Pumps Division, Kesurdi, Khandala (2017)



Irrigation & Process Pumps Division, Pune (1960)



Foundry Division, Vambori (1974)



Power Projects Division, Chinchwad (1978)



Valves Division, Coimbatore (1987)



Standard Pumps Division, Sinnar (1994)

KSB Pumps, Valves & Systems - The heart of your system

Fluid is one of the most dynamic elements of nature. Whenever there arises a need to harness this vibrant energy, KSB provides the ultimate technology. Wherever the task, whatever the expectations, KSB yields a free flow of solutions. Right from transportation and distribution of water, waste water and industrial fluids, to thermal and air-conditioning system needs. KSB regulates every element to perfection, economically, efficiently and reliably. A technology leader offering total fluid dynamics and handling solutions, KSB specialises in high-quality customer care. Support that is extended through consultation, planning, installation, maintenance and round the clock back-up. While KSB pumps gush out a free flow to success, KSB valves monitor and ensure the success. Today, KSB specialises in customising products, systems, services and solutions to conquer the most dynamic elemental force in the world.



CPK SO



Etaline

SICCA® 900-2500
Type GLC

moviBOOST V



KSB - A One-Stop Technology Shop

A comprehensive range of KSB pumps and valves are manufactured from the facilities of KSB Pumps Limited spread over six centres in India... each facility dedicated to a product line. In-house design and manufacture of jigs, fixtures and dies under strict tolerances, ensure that the highest levels of quality are maintained. An ISO 9001, ISO 14001 & OHSAS 18001 organisation, KSB in India has systematised concurrent production of dissimilar components. All components, each with different specifications, flow through the computer-controlled manufacturing process.

A systematised solution by KSB involves more than merely designing and building the right pump and valve to meet the exacting demands of a variety of customers.

All the pumps and valves are offered to the market through a very wide distribution network comprising of 4 zonal offices, 16 branch offices, over 800 authorised dealers, 5 service stations, over 200 authorised service centres and 22 godowns... All this to ensure, that for every KSB pump and valve in use, there is a KSB sales and service outlet around the corner.

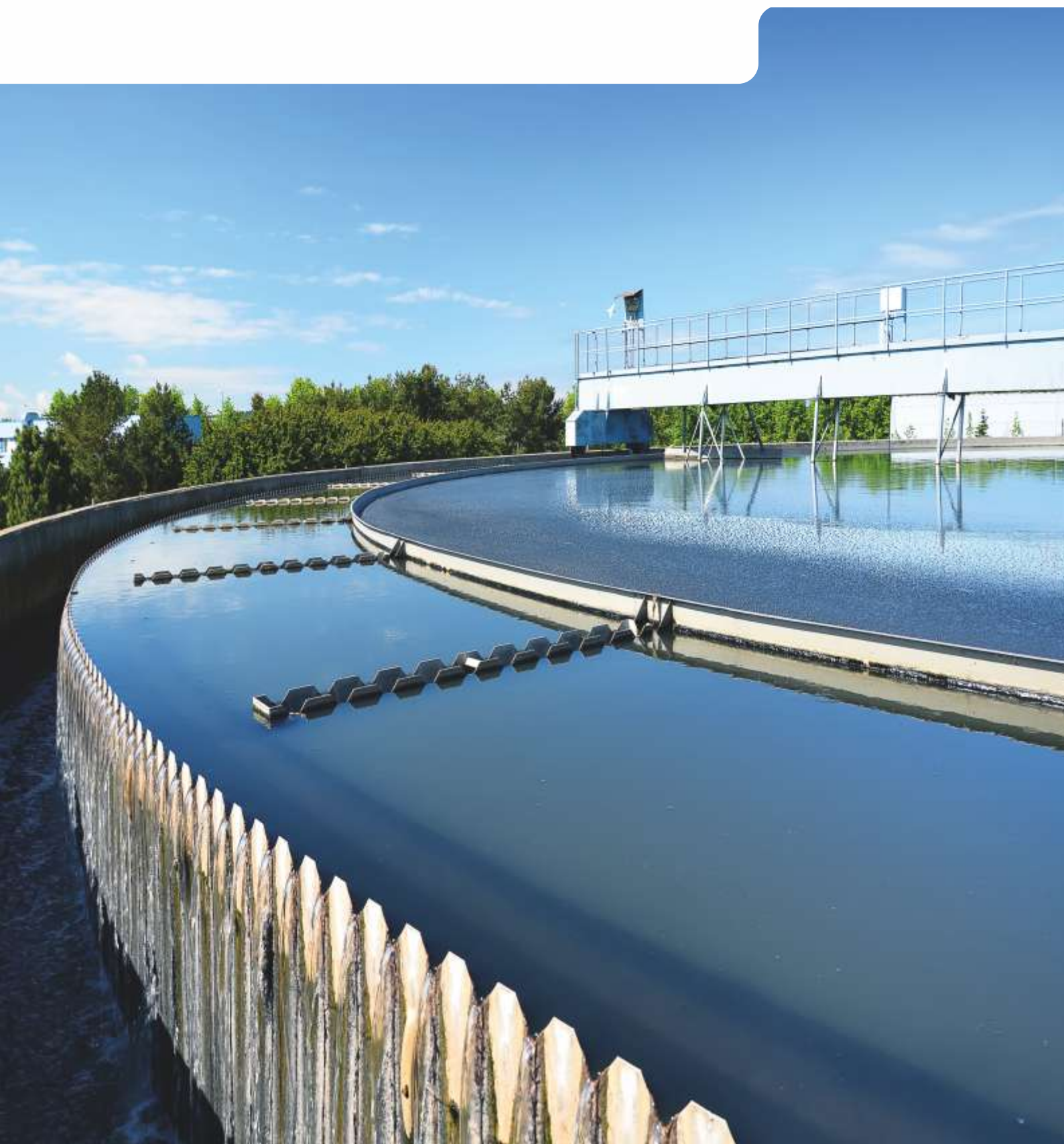
KSB not only engineers state-of-the-art pump and valve technology but also strives to provide an air-tight array of service around pumps and valves. KSB stands by its customers all along, through the entire implementation of a project, offers continuous after-sales service and undertakes a variety of service contracts and energy audits to provide optimum and cost effective solutions.

At KSB, the relation with the customer is an ongoing partnership, continuing beyond product commissioning. Regular tailor-made training sessions are held, in-house and at the customers' sites, to acquaint them with selection, operation and maintenance to get the best from KSB pumps and valves.

All this has been made possible by the commitment and dedication of the collective strength of about 2000 strong team who firmly believe that rewards come through the success of a client's project.



**Pumps for water, waste water treatment,
sewage handling & industrial applications**



Pumps for water, waste water treatment, sewage handling & industrial applications

Product & it's operating range

Ama® Drainer



Pump Size	32 mm
Capacity	up to 230 lpm
Head	up to 12 m
Motor	in 1Ø 0.5 kW
Temperature	up to 40°C

Construction and applications

Ama-Drainer 300 series

Vertical fully floodable submersible motor with In built swing check valve. Jacket cooled single phase motor with integrated temperature switch. Float switch for automatic operation.

Suitable for lowering surface water level, transfer of water, agricultural pits, & sprinklers in gardens, drainage of cellars / basin

Ama® Porter



Pump Size	50 mm
Capacity	up to 480 lpm.
Head	up to 15 m
Motor Rating	up to 1.1 kW (1Ø) up to 1.5 kW (3Ø)
Temperature	up to 40°C

Vertical, monobloc pumpset, free flow impeller of two sizes, 1Ø and 3Ø motors with IP 68 protection, 1Ø motor with built-in thermal overload protection and float switch, bi-directional mechanical seal.

Suitable for pumping surface water, rain water, waste water containing solids, drainage of sumps liable to flood, agricultural pits and canals.

S STAR GD



Pump Size	up to 50 mm
Capacity	up to 683 lpm
Head	up to 35 m
Motor rating	3 to 5 hp
Temperature	Ambient

Single stage, submersible centrifugal pumps of closed coupled (monobloc) construction.

De-watering pumps for storm water and rain water pumping applications

Amarex IN, KRTU



Pump Size	65 & 100 mm
Capacity	up to 180 m³/hr
Head	up to 47 m
Motor Rating	up to 8.9 kW
Temperature	up to 80°C
Speed	up to 2900 rpm

Single stage, submersible, centrifugal pumps of closed coupled (monobloc) construction.

Amarex IN pumps are suitable for handling waste water transport, storm water transport, waste water treatment etc.

KRTU pumps are suitable for handling municipal and industrial waste water. 3 types of impellers available to suit a variety of needs - E (single vane), K (non-clog two channel) & F (free flow) in transportable and stationary installation.

KRT



Pump Size	up to 400 mm
Capacity	up to 3600 m³/hr.
Head	up to 80 m
Motor rating	up to 350 kW
Temperature	up to 60°C

Single stage, submersible centrifugal pumps of close coupled (monobloc) construction.

For pumping all types of sewage, and effluent in water treatment and industry, especially untreated sewage, with long fibers and solid substances, liquids containing air and gas as well as raw, activated and digested sludge.

KRT pumps can handle solids upto 140 mm size.



Pumps for **pressure boosting, fire fighting, de-watering & air conditioning** for industrial, municipal and building services applications

Product & it's operating range

Gamma (Split Case Pumps)



Pump Size	DN 80 to 350 mm
Capacity	up to 3200 m ³ /hr.
Head	up to 87 mtrs.
Pressure	up to 10 bar
Temperature	up to 80°C
Speed	1450 rpm

Construction and applications

Centrifugal, horizontal split casing pumps with double entry impeller design.
Suitable for general water works, pumping stations, power stations, industrial water supply etc.

Movitec B



Pump Size	2, 4, 6, 10, 15, 25, 60, 90, 125
Capacity	up to 160 m ³ /hr.
Head	up to 250 mtrs.
Pressure	up to 40 bar
Temperature	-20 to 140°C
Speed	up to 3600 rpm

Multi-stage, vertical inline high-pressure centrifugal pumps in ring-section design.

Suitable for general water supply, sprinkling, irrigation and pressure boosting systems, warm water, hot water and cooling water re-circulation, boiler feed systems, domestic water supply systems and washing plants.

Pumps for pressure boosting, fire fighting, de-watering & air conditioning for industrial, municipal and building services applications

Product & it's operating range

moviBOOST Kt, Vt, VPt



Capacity	up to 800 m ³ /hr.
Head	up to 250 m
Pressure	up to 40 bar
Temperature	up to 140°C

Construction and applications

Fully automatic pressure boosting units available in three variants - Kt, Vt & VPt with 2 to 6 vertical high-pressure pumps and fully electronic control of the required supply pressure with standard potential free contacts for fault indication and status.

Suitable for residential & commercial buildings, hospitals, hotels, departmental stores, airports, metro stations, convention centre, sport complex etc.

moviBOOST Dual



Capacity	up to 28 m ³ /hr.
Head	up to 54 m
Pressure	up to 10 bar
Temperature	up to 70°C

Fully automatic pressure boosting units available in three variants - Ds, Dt & Vt with two horizontal high-pressure pumps and fully electronic control of the required supply pressure.

Suitable for residential & commercial buildings, hospitals, hotels, departmental stores etc.

Fire Fighting Pumps



Capacity	up to 700 m ³ /hr.
Head	up to 250 m
Pressure	up to 40 bar
Temperature	up to 140°C
Speed	up to 2900 rpm

Complete range of fire pump sets which includes Hydrant, sprinkler, (motor as well as engine driven) jockey pumps, curtain pumps and terrace booster as per local regulations and customer specifications.

Package includes - Pump, base frame, coupling, coupling guard, electric motor, diesel engine, jockey pump along with accessories like control cabinet, fuel tank, batteries, switches etc.

MEGA



Capacity	up to 540 m ³ /hr.
Head	up to 100 m
Discharge press.	up to 16 bar
Temperature	up to 140°C
Speed	up to 2900 rpm

Horizontal, end suction, centrifugal, radially split volute casing pumps in back-pull-out design fitted with single stage radial impeller.

Suitable for handling clear liquids in applications exclusively for fire fighting.



Pumps for water supply, transport and treatment for industrial, municipal and building services applications

Product & it's operating range

KWP



Pump Size	65 to 300 mm
Capacity	up to 1900 m ³ /hr.
Head	up to 100 mtrs.
Pressure	up to 10 bar
Temperature	-30 to 250°C
Speed	up to 2900 rpm

Construction and applications

Horizontal, end suction pump in back pull-out design with radial flow impellers of single, double, or multivane, closed or semi-closed type.

Suitable to handle contaminated fluids, sludges, slurries, fluids containing ad-mixture and thick stock of all kinds having consistency up to 3%.

Etanorm G



Pump Size	25 to 150 mm
Capacity	up to 660 m ³ /hr.
Head	up to 160 m
Discharge press.	up to 16 bar
Temperature	-30 to 140°C
Speed	up to 2900 rpm

Horizontal, end suction, centrifugal, radially split volute casing pumps in back-pull-out design fitted with single stage radial impeller.

Suitable for general water supply, sprinkling, irrigation, booster plants, circulation of warm, hot and cooling water, delivery of condensate and boiler-feed water and fire fighting applications.

Etabloc



Pump Size	25 to 150 mm
Capacity	up to 640 m ³ /hr.
Head	up to 160 m
Discharge press.	up to 16 bar
Temperature	-30 to 140°C
Speed	up to 2900 rpm

Compact, horizontal, end suction, centrifugal, radially split volute casing pumps in monobloc construction.

Suitable for general water supply, sprinkling, irrigation, booster plants, circulation of warm, hot and cooling water, delivery of condensate and boiler-feed water and fire fighting applications.

Etaline



Pump Size	32 to 200 mm
Capacity	up to 700 m ³ /hr.
Head	up to 95 m
Discharge press.	up to 16 bar
Temperature	-30 to 140°C
Speed	up to 2900 rpm

Centrifugal, radially split in-line pumps in monobloc construction. Can be mounted horizontally or vertically. Flanges are drilled to ASME or EN standard. Suction and delivery sizes are common and hence no need of expander.

Suitable for fire fighting, air conditioning, industrial recirculation, HVAC systems etc.

MOVI



Pump Size	32 mm
Capacity	up to 18 m ³ /hr.
Head	up to 400 m
Discharge press.	up to 40 bar
Temperature	-10 to 140°C
Speed	up to 2900 rpm

Horizontal, radially split, ring section, multi-stage pumps with radial impellers.

Suitable for general water supply, sprinkling, irrigation, booster plants, circulation of warm, hot and cooling water, delivery of condensate and boiler-feed water and fire fighting applications.

Pumps for water supply, transport and treatment for industrial, municipal and building services applications

Product & it's operating range

WK, WL, WKS, WKFI



Pump Size	40 to 150 mm
Capacity	up to 630 m ³ /hr.
Head	up to 780 m
Discharge press.	up to 63 bar
Temperature	up to 230°C
Speed	up to 4500 rpm

Construction and applications

Horizontal, radially split, ring section, high pressure multi-stage pumps with radial impellers.

Suitable for water works, irrigation, sprinkler, installations, boiler-feed applications, condensate extraction, fire fighting and generating high pressure water used in hydraulic presses and descaling plants.

WKL



Pump Size	40 mm
Capacity	up to 27 m ³ /hr.
Head	up to 250 m
Discharge press.	up to 28 bar
Temperature	up to 140°C
Speed	up to 2900 rpm

Horizontal, radially split, ring section, multi-stage pumps with radial impellers.

Suitable for water works, irrigation, sprinkler installations, boiler-feed applications, condensate extraction, fire fighting and generating high pressure water used in hydraulic presses and descaling plants.

Multitec



Pump Size	32 to 150 mm
Capacity	up to 850 m ³ /hr.
Head	up to 630 mtrs.
Pressure	up to 63 bar
Temperature	-10 to 200°C
Speed	up to 4000 rpm

Centrifugal, ring section, multi-stage pumps in modular design for handling pure and slightly aggressive media.

Suitable for water works, irrigation and boiler feed applications.

HDA, HDB



Pump Size	40 to 150 mm
Capacity	up to 576 m ³ /hr.
Head	up to 2245 mtrs.
Pressure	up to 230 bar
Temperature	up to 200°C
Speed	up to 5500 rpm

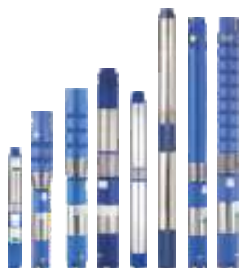
Horizontal, high pressure multi-stage pumps with ring section casing and radial single entry impellers.

Suitable for boiler-feed applications and in high pressure hydraulic circuits for coke cutting, descaling and municipal water supply.

Pumps for water supply, transport and treatment for industrial, municipal and building services applications

Product & it's operating range

Submersible Motor Pumps



Borewell dia.	4 to 14 inch
Capacity	up to 800 m ³ /hr.
Head	up to 400 m
Motor rating	3 -150 HP
Temperature	Ambient
Speed	2900 rpm

Construction and applications

Submersible pump in multi-stage construction with radial or mixed flow impellers coupled with oil or water filled, single/three phase submersible motors. Pumps with SS jacket are also available up to 100 mm diameter.

Suitable for horticulture, irrigation, housing, building services and farm houses, ornamental fountains etc.

Submersible Pumps in Stainless Steel



Pump models	8
Capacity	up to 1300 lpm
Head	up to 210 mtrs.
Temperature	Ambient
Motor rating	0.5 to 15 HP / 11 kW

KSBsol - A complete Stainless Steel Solar pump series viz. CORAChrom in 100 mm (4") & 150 mm (6") is built in India with German technology. KSBsol offers a range of borewell submersible pump and AC motor sets are specially designed and matched to your requirements of solar pumping application. KSBsol CORAChrom 100mm (4"), 150mm (6") series are compliant to MNRE (Ministry of New & Renewable Energy) specifications.

PERIBLOC



Pump models	9
Capacity	up to 80 lpm
Head	up to 54 mtrs.
Temperature	Ambient
Motor rating	up to 1.5 HP

Mini monobloc pumpsets in compact design.

Available in 9 models - PERIBLOC I & II, Delite I, Delite II & Delite 15, Deluxe I & Deluxe II, PERIBLOC GX I & GX II are available in CI version.

Suitable for pumping of water to overhead tanks, in bungalows, fountains etc.

CUTE / CUB Series



Pump size	25 mm
Models	6
Capacity	up to 57 lpm
Head	up to 36 mtrs.
Temperature	Ambient
Motor rating	up to 1 HP

Self priming mini monobloc pump fitted with SKF bearings in compact design. Can withstand wide voltage range. Suction lift up to 8m is possible.

Suitable for pumping of water to overhead tanks, in bungalows, fountains, farmhouses etc.

AGRIBLOC



Pump size	up to 80 x 80 mm
Capacity	up to 920 lpm
Head	up to 30 mtrs.
Temperature	Ambient
Motor rating	up to 2 HP

Single stage, monobloc pumps in compact and light weight design. These pumps are available in single phase power supply. Dynamically balanced rotating parts ensures minimal vibrations. Suitable for agriculture, industries, gardens, fountains etc.

Pumps for water supply, transport and treatment for industrial, municipal and building services applications

Product & it's operating range

ULTRA



Pump size	65 x 50 to 100 x 75
Capacity	up to 1633 lpm
Head	up to 50 mtrs.
Temperature	Ambient
Motor rating	3 to 10 HP

Construction and applications

3 Phase Centrifugal pumps in Monobloc design with rigid cast iron body. Available in 7 models ranging from 3 Hp to 10 Hp for agricultural applications. These models are available with 2 pole motor.

MONOSUB R, RE



Pump size	25 mm
Capacity	up to 417 lpm
Head	up to 29 mtrs.
Temperature	Ambient
Motor rating	up to 2 HP

Single stage, monobloc, open-well submersible pumps. Suitable for agriculture, drinking water supply, fountains, buildings, farm houses etc. Available in single phase models.

K STAR & S STAR



Pump size	100 mm
Capacity	up to 110 m ³ /hr
Head	up to 51 mtrs.
Temperature	Ambient
Motor rating	3 to 10 HP (S Star) 3 to 7.5 HP (K Star)

Single Stage, monobloc, 3 phase openwell Submersible pumps. Available in 2 models. K Star & S Star. Suitable for agriculture, drinking water supply, fountains, buildings, farm houses etc. Available in both Aluminium and Copper rotor.

PERISTAR SSE X



Pump models	3
Capacity	up to 35 lpm
Head	up to 36 mtrs.
Temperature	Ambient
Motor rating	up to 1 HP

Single stage monobloc pumps in compact design. Stainless Steel casing with Brass impellers and Stainless Steel shaft, Aluminium die cast motor body. Pumps can be used for booster applications, residential flats, water circulation in solar systems etc.

PERISTAR V



Pump models	3
Capacity	up to 45 lpm
Head	up to 39 mtrs.
Temperature	Ambient
Motor rating	up to 1 HP

Centrifugal pumps in monobloc construction. Self priming up to 8 m. Robust and sturdy design. Capacitor start and run type design eliminates centrifugal switch. Pressure die cast rotor with TEFC enclosure for motors. FAG make ball bearings sealed for life. Suitable for pumping of water to overhead tanks, in bungalows, fountains, car washing, lawn sprinklers etc.

Pumps for water supply, transport and treatment for industrial, municipal and building services applications

Product & it's operating range

Construction and applications

PERISTAR GS



Pump models	3
Capacity	up to 57 lpm
Head	up to 36 mtrs.
Temperature	Ambient
Motor rating	up to 1 HP

Centrifugal pumps in monobloc construction. Self priming up to 8 m. Robust and sturdy design. Capacitor start and run type design eliminates centrifugal switch. Pressure die cast rotor with TEFC enclosure for motors.

Suitable for pumping of water to overhead tanks, in bungalows, fountains, car washing, lawn sprinklers etc.

PERISTAR ZD



Pump size	25x25 mm
Capacity	up to 50 lpm
Head	up to 39 mtrs.
Temperature	Ambient
Motor rating	up to 1 HP

Centrifugal pumps in monobloc construction. Self priming up to 8 m. Capacitor start induction run single phase motor for high torque.

Suitable for car washing, booster application, water circulation in solar heating systems etc.

OPAL



Pump models	5, 10, 10CX & 15
Capacity	up to 215 lpm
Head	up to 37 mtrs.
Temperature	Ambient
Motor rating	up to 1.5 HP

Open-well submersible pumpsets in monobloc construction

Wide voltage range. SS jacketed motor with NORYL impellers.

Suitable for pumping of water to overhead tanks, flood irrigation, de-watering of storm water etc.

PERIJET



Pump sizes	25 mm
Capacity	up to 52 lpm
Head	up to 30 mtrs.
Temperature	Ambient
Motor rating	up to 1HP

Self priming centrifugal pumps designed for application in open and shallow wells, sumps.

These pumps find wide applications in residential bungalows, hotels, small farms, lawns etc.

PERIBOOST



Pump sizes	25 mm
Capacity	up to 33 lpm
Head	up to 24 mtrs.
Temperature	65°C
Motor rating	up to 5 HP

Pressure booster pumps designed for pressurized water showers in bathrooms

Pumps for water supply, transport and treatment for industrial, municipal and building services applications

Product & it's operating range

Construction and applications

MULTIBOOST



Tank Capacity	24 ltr.
Capacity	up to 266 lpm
Head	up to 53 mtrs.
Temperature	Ambient
Motor rating	up to 3 HP

Horizontal, centrifugal, radially split, multistage pumps fitted with pressure tank, pressure sensor and gauge.
Suitable for water pressure boosting applications in bungalows, flats, individual bathrooms etc.

Vertical Openwell Series



Pump sizes	75 mm
Capacity	up to 1600 lpm
Head	up to 198 mtrs.
Temperature	Ambient
Motor rating	3Ø up to 22.5 HP

Multistage monobloc openwell submersible pumpset. 3Ø in C.I. construction.
Suitable for agriculture, farm houses, drinking water supply etc.

MULTISUB



Capacity	up to 105 lpm
Head	up to 60 mtrs.
Temperature	Ambient
Motor power	1 HP / 0.75 kW
Voltage	240 v

Single Phase, vertical, openwell multistage pump. Made up of SS Jacket with NORYL internals. Suitable for pumping water to high head.

Conti



Cable Sizes	
1.5 Sq. mm	10.0 sq. mm
2.5 Sq. mm	16.0 sq. mm
4.0 Sq. mm	25.0 sq. mm
6.0 sq. mm	35.0 sq. mm

CONTI - 3 core PVC insulated flat cables with superior quality and assured long life. Every cable is precisely manufactured with exceptional process control. The conductor is made of multiple strands of finely drawn copper wires having purity of minimum 99.9%. The cables are ISI 694 marked.

Gardo & Gardo Plus



Reliable control panels for single phase pumpsets. Control panels are designed for wide voltage operating range.

Manufactured using the best-in-class quality material and stringent quality control tests, these panels proves the best control panel for your pumpset

Size	0.5 hp to 5 hp	Voltage	230 v
-------------	----------------	----------------	-------

D Start



Three phase direct on line starter for non reversing control of all types of induction motor.

Size	3 hp to 7.5 hp
Voltage	440 v

Pumps for chemical, petrochemical, oil production,
processing, steam & power generation



Pumps for **chemical, petrochemical, oil production, processing, steam & power generation**

Product & it's operating range

Etanorm SYT



Pump Size	25 to 150 mm
Capacity	up to 625 m ³ /hr.
Head	up to 102 m
Discharge press.	up to 16 bar
Temperature	-30 to 350°C
Speed	up to 3600 rpm

Construction and applications

Horizontal, end suction, centrifugal, radially split, volute casing process pumps in back-pull-out design, fitted with a radial impeller.
Suitable for heat transfer system, hot water circulation etc.

MegaCPK



Pump Size	25 to 250 mm
Capacity	up to 1160 m ³ /hr.
Head	up to 162 m
Discharge press.	up to 25 bar
Temperature	-30 to 300°C
Speed	up to 2900 rpm

Horizontal, end suction, centrifugal, radially split, volute casing process pump in back-pull-out design, fitted with a radial impeller.
Suitable to handle aggressive, organic and inorganic fluids in chemical and process industries like paper, cellulose, sugar, food, textile, drugs, breweries, pharmaceutical and distilleries.

HPK-L



Pump Size	25 to 250 mm
Capacity	up to 1160 m ³ /hr.
Head	up to 162 m
Discharge press.	up to 25 bar
Temperature	-40 to 400°C
Speed	up to 3600 rpm

Horizontal, end suction, centrifugal, radially split, volute casing process pumps in back-pull-out design, fitted with a radial impeller. Suitable for hot water circulation, process engineering etc

APP



Pump Size	32 to 150 mm
Capacity	up to 700 m ³ /hr.
Head	up to 100 m
Discharge press.	up to 16 bar
Temperature	-30 to 160°C
Speed	up to 3600 rpm

Horizontal, single stage, end suction, radially split volute casing pump in back-pull-out design.
Suitable for continuous operation in process industries to handle clean, abrasive corrosive liquids and stock up to **8% consistency**.

CPK



Pump Size	32 to 250 mm
Capacity	up to 1200 m ³ /hr.
Head	up to 150 m
Discharge press.	up to 25 bar
Temperature	-70 to 350°C
Speed	up to 2900 rpm

Horizontal, end suction, centrifugal, radially split, volute casing process pumps in back-pull-out design, fitted with a radial impeller.

Suitable to handle aggressive organic and inorganic fluids in chemical and petrochemical industries, refinery off-sites, paper and pulp, food and sugar industry, sea water desalination plants.

Pumps for **chemical, petrochemical, oil production, processing, steam & power generation**

Product & it's operating range

Etanorm C



Pump Size	25 to 150 mm
Capacity	up to 660 m³/hr.
Head	up to 160 m
Discharge press.	up to 16 bar
Temperature	-30 to 140°C
Speed	up to 3600 rpm

Construction and applications

Horizontal, end suction, centrifugal, radially split, volute casing process pumps in back-pull-out design, fitted with a radial impeller.

Suitable to handle aggressive, organic and inorganic fluids in chemical and process industries like paper, cellulose, sugar, food, textile, drugs, breweries, pharmaceutical and distilleries.

Etabloc C



Pump Size	25 to 150 mm
Capacity	up to 550 m³/hr.
Head	up to 160 m
Discharge press.	up to 16 bar
Temperature	-30 to 140°C
Motor rating	up to 22 kW

Single stage volute casing pump with back pull out design and ratings to EN 733, with radially split volute casing, replaceable wear rings, stub shaft design, closed radial impeller with multiple curved vanes, single mechanical seal to EN 12756, and a shaft equipped with replaceable shaft sleeve in seal area.

Suitable for Water supply, swimming pools, irrigation, cooling water, spray irrigation, service water, drinking water, condensate, hot water.

Magnochem



Pump Size	25 to 100 mm
Capacity	up to 300 m³/hr.
Head	up to 150 m
Discharge press.	up to 25 bar
Temperature	-90 to 300°C
Speed	up to 2900 rpm

Horizontal, seal-less volute casing pump in back pull-out design, with magnetic drive, to ISO 2858 / EN 22 858 / ISO 5199, with radial impeller, single-stage, single-entry ATEX-compliant.

For handling aggressive, toxic, explosive, valuable, flammable, malodorous or harmful fluids in the chemical, petrochemical and general industries, chemical industry, petrochemical industry, refineries, food and beverage industries nuclear and fossil-fuelled power plants, general industry and process engineering.

KWP O



Pump Size	65 to 150 mm
Capacity	up to 400 m³/hr.
Head	up to 65 m
Discharge press.	up to 10 bar
Temperature	-30 to 250°C
Speed	up to 2900 rpm

Horizontal, single stage, single entry, back pull out type, radially split volute casing process type centrifugal pumps with radial flow non clogging, semi open multi vane, overhung impeller. Dimension complying to standardized chemical pumps in accordance with DIN 24546.

Can be used to pump contaminated fluids, sludge, fluids containing solids admixtures & thick stocks of all kinds. With O impeller, fluids containing air ≤ 5% & stock density of pulp ≤ 5% can be pumped.

CPK O / SO



Pump Size	25 to 100 mm
Capacity	up to 260 m³/hr.
Head	up to 140 m
Discharge press.	up to 16 / 25 bar
Temperature	-70 to 200°C
Speed	up to 2900 rpm

Horizontal, radially split volute casing pump in back pull-out design, with semi open Impeller, single entry, single-stage; to EN 22 858/ISO 2858/ISO 5199; Complemented by pumps of DN 25.

These pumps can be used to Handling aggressive (non abrasive) polymerizing media or media liable to form lumps as well as gas-containing liquids in chemical industries

Pumps for **chemical, petrochemical, oil production, processing, steam & power generation**

Product & it's operating range

MEGACHEM



Pump Size	25 to 150 mm
Capacity	up to 540 m ³ /hr.
Head	up to 100 m
Discharge press.	up to 16 bar
Temperature	-30 to 200°C
Speed	up to 3600 rpm

Construction and applications

Horizontal, end suction, centrifugal, radially split, volute casing process pump in back-pull-out design, fitted with a radial impeller. Suitable to handle aggressive, organic and inorganic fluids in chemical and process industries like paper, cellulose, sugar, food, textile, drugs, breweries, pharmaceutical and distilleries.

RPH



Pump Size	25 to 250 mm
Capacity	up to 1500 m ³ /hr.
Head	up to 270 m
Discharge press.	up to 51 bar
Temperature	up to 450°C
Speed	up to 3600 rpm

Horizontal, single stage, radially split pump in back-pull-out design with end suction fitted with a single entry closed radial impeller. Designed to API 610 latest edition.

Suitable to handle products in refineries, chemical, petrochemical and coal conversion plants, power station and environmental engineering applications.

SPnorm



Size	DN 40, 50, 80, 100, 150
Capacity	253 m ³ /hr
Head	6 to 50 mtrs.
Motor rating	1 to 25 HP

Horizontal self priming volute casing pumps, single stage with semi open impeller, in back pull out design. Long coupled on baseplate, suction lift up to 7 metres.

Suitable pump for pumping muddy water, sewage, polluted liquids including solids etc.

Applications where priming & foot valve is to be avoided.

SPbloc



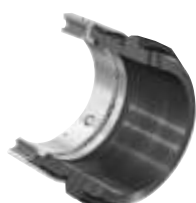
Size	DN 40, 50, 80
Capacity	70 m ³ /hr
Head	6 to 36 mtrs.
Motor rating	1 to 7.5 HP

Horizontal self priming volute casing pumps, single stage with semi open impeller, in back pull out design. Monobloc, mono shaft design, hydraulics are assembled on extended motor shaft, suction lift up to 7 metres.

Suitable pump for pumping muddy water, sewage, polluted liquids including solids etc.

Applications where priming & foot valve is to be avoided.

KSB Make Seals - 5A / 5B



Operating Prss.	upto 16 & 25 bar (dynamic) up to 37.5 bar (static)
Temperature	-30°C to 220°C
Spring Travel	+/- 3 mm
Seal Size	As per std. selection chart
Business type	Standard (KSB EasySelect)

5A - Single mechanical seal, unbalanced Type, Multi-spring arrangement, Bidirectional rotation type.

5B - Single mechanical seal, balanced Type, Multi-spring arrangement, Bidirectional rotation type.

Pumps for **chemical, petrochemical, oil production, processing, steam & power generation**

Product & it's operating range

HDA, HDB



Pump Size	42 to 150 mm
Capacity	up to 576 m ³ /hr.
Head	up to 2245 mtrs.
Pressure	up to 230 bar
Temperature	up to 200°C
Speed	up to 5500 rpm

Construction and applications

Horizontal, high pressure multi-stage pumps with ring section casing and radial single entry impellers.
Suitable for boiler-feed applications and in high pressure hydraulic circuits for coke cutting, descaling and municipal water supply.

HG



Pump Size	2 to 5
Capacity	up to 1400 m ³ /hr.
Head	up to 4200 m
Discharge press.	up to 420 bar
Temperature	up to 200°C
Speed	up to 7000 rpm

Horizontal, multi-stage, centrifugal pump in ring section design with single or double entry radial impellers.
Suitable for boiler-feed water for captive and combined cycle co-generation power plants.

CHTC, CHTR



Pump Size	2 to 6
Capacity	up to 1450 m ³ /hr.
Head	up to 4200 m
Discharge press.	up to 420 bar
Temperature	-110°C to 200°C
Speed	up to 7000 rpm

Horizontal, multi-stage, centrifugal barrel casing pump in ring section design with radial impeller, single or double entry.
Suitable for boiler-feed water for captive and combined cycle co-generation power plants. CHTR pumps are adapted to API 610 latest edition requirements to handle hydrocarbons.

HGM



Pump Size	2 to 4
Capacity	up to 280 m ³ /hr.
Head	up to 1100 m
Discharge press.	up to 120 bar
Temperature	up to 140°C
Speed	up to 3600 rpm

Horizontal, multi-stage, centrifugal pump in ring section design with medium lubricated plain bearings.
Suitable for boiler-feed duties and condensate transport in power stations and industrial boilers.

RPHb



Pump Size	80 to 200 mm
Capacity	up to 875 m ³ /hr.
Head	up to 650 m
Discharge press.	up to 100 bar
Temperature	-110°C to 450°C
Speed	up to 3600 rpm

Horizontal, radially split, volute casing pump in process type construction according to API 610 latest edition / VDMA 24297, with radial flow impeller, single suction two stage design, back to back impeller arrangement and centreline mounting.
Suitable for handling various petroleum products.

Pumps for **chemical, petrochemical, oil production, processing, steam & power generation**

Product & it's operating range

Construction and applications

WKT, WKTR



Pump Size	40 to 150 mm
Capacity	up to 300 m ³ /hr.
Head	up to 500 m
Discharge press.	up to 63 bar
Temperature	-110°C to 160°C
Speed	up to 3600 rpm

Vertical, radially split, multi-stage ring section pump with radial / mixed flow single entry impellers. WKTR pumps designed to API 610 latest edition.

Suitable for condensate extraction from steam turbines, handling cold or hot water, process liquids for refinery & petrochemical applications & ammonia handling

WKTA, WKTB



Pump Size	up to 2500 mm
Capacity	up to 370 m ³ /hr.
Head	up to 40 m
Discharge press.	up to 100 bar
Temperature	up to 100°C
Speed	up to 1800 rpm

Vertical, can type, radially split, multi-stage ring section pump with double entry suction stage.

Suitable for condensate extraction in power stations and industrial power plants.

CHTD



Capacity	up to 3600 m ³ /hr.
Head	up to 4500 m
Operating press.	up to 450 bar
Temperature	up to 210°C
Speed	up to 6200 m ⁻¹

Horizontal, Centrifugal Barrel Casing pump in ring section design with radial impeller, single entry.

Suitable for Pumping Boiler feed water in Supercritical power station and industrial plants.

YNK



Pump Size	up to DN 500
Capacity	up to 4,500 m ³ /hr.
Head	up to 370 m
Operating press.	up to 40 bar
Temperature	up to +210°C

Horizontal, radially split, single-stage, double-entry boiler feed booster pump (booster system) with single or double cast steel volute casing.

Suitable for Nuclear Power Stations and Thermal Power Stations.

KWP



Pump Size	DN 40 to 900
Capacity	up to 17000 m ³ /hr.
Head	up to 100 m*
Discharge press.	up to 10 bar*
Temperature	-40 to +140°C*
* Higher values available on request	

Horizontal radially split volute casing pump in back pull-out design, single stage, single-entry, available with various impeller types : closed multi-channel impeller, open multi-vane impeller and free-flow impeller.

Suitable for Flue gas desulphurization in Thermal Power Plants, Coal upgrading plants, Industrial applications, Waste water transport.

Gate, Globe & Check Valves for chemical, petrochemical,
oil production, processing, steam & power generation



Valves for chemical, petrochemical, oil production, processing, steam and power generation

Product & its operating range

SICCA® 800-2500 - Type GTF



Size	15 to 50 mm
Pressure	up to 264 bar
Temperature	up to 593°C

Construction and applications

Forged gate valve to API 602 (# 800/1500), bolted bonnet for # 800, welded bonnet for # 1500 / 2500, socket weld ends for # 800-2500, socket / thread ends for # 800, solid wedge, integral back seat and non-rotating stem.

Available in Carbon Steel, Stainless Steel & Alloy Steel.

SICCA® 150-600 - Type GTC



Size	50 to 600 mm
Pressure	up to 104 bar
Temperature	up to 593°C

Cast gate valve to API 600, bolted bonnet, butt weld or flanged ends, flexible wedge, out-side screw and yoke and non-rotating stem.

Available in Carbon Steel, Stainless Steel & Alloy Steel

SICCA® 900-3600 - Type GTC



Size	50 to 600 mm
Pressure	up to 431 bar
Temperature	up to 650°C

Cast gate valve to ASME B 16.34, pressure seal bonnet, double disc wedge design, butt weld ends, integral stellited back seat, out-side screw and yoke and non-rotating stem.

Available in Carbon & Alloy Steel.

SICCA® 800-4500 - Type GLF



Size	15 to 50 mm
Pressure	up to 431 bar
Temperature	up to 650°C

Forged globe valve to API 602 (# 800/1500), ASME B 16.34 (# 2500/4500), bolted bonnet for # 800, welded bonnet for # 1500/2500/4500, socket weld ends for # 800-4500, socket / thread ends for # 800, integral back seat, outside screw and yoke and rotating stem.

Available in Carbon Steel, Stainless Steel & Alloy Steel

SICCA® 150-600 - Type GLC



Size	50 to 250 mm
Pressure	up to 104 bar
Temperature	up to 593°C

Cast globe valve to BS 1873, bolted bonnet, flanged or butt weld ends, back seat bush and out-side screw and yoke.

Available in Carbon, Alloy & Stainless Steel.

Valves for chemical, petrochemical, oil production, processing, steam and power generation

Product & its operating range

SICCA® 900-2500 - Type GLC



Size	50 to 200 mm
Pressure	up to 431 bar
Temperature	up to 650°C

Construction and applications

Cast globe valve to ASME B 16.34, pressure seal bonnet design, butt weld ends, tapered seat, integral stellited back seat, outside screw and yoke, yoke head with ISO flange for actuator fitting, non-rotating stem and Y-pattern body design.
Available in Carbon & Alloy Steel.

SICCA® 800-4500 - Type PCF



Size	15 to 50 mm
Pressure	up to 431 bar
Temperature	up to 650°C

Forged check valve to API 602 (# 800/1500), ASME B 16.34 (# 2500/4500), bolted cover for # 800, welded cover for # 1500/2500/4500, socket weld ends for # 800-4500, socket / thread ends for # 800, spring loaded disc.
Available in Carbon Steel, Stainless Steel & Alloy Steel.

SICCA® 150-600 - Type SCC



Size	50 to 600 mm
Pressure	up to 104 bar
Temperature	up to 593°C

Cast check valve as per BS 1868, bolted bonnet, flanged or butt weld ends, swing disc arrangement with inside hinge pin (up to 300 mm) and non-turning disc.
Available in Carbon, Alloy & Stainless Steel.

SICCA® 900-3600 - Type SCC



Size	50 to 600 mm
Pressure	up to 431 bar
Temperature	up to 650°C

Cast check valve as per ASME B 16.34, pressure seal bonnet design, butt weld ends, swing disc arrangement with inside hinge pin and non-turning disc.
Available in Carbon & Alloy Steel.

Ball Valves - ECOLINE



Size	15 to 400 mm
Pressure	up to 136 bar
Temperature	up to 200°C

ECOLINE range of Cast & Forged, 1, 2 & 3 piece construction ball valves. Designed as per BS EN ISO 17292 and are available up to class 800.

Suitable for process, industry, water, steam, oil & gas applications.

KSB Pumps Valves & Systems - We are where you are

Manufacturing Plants :

Head Office & Pimpri :
Irrigation & Process Division
Mumbai-Pune Road, Pimpri,
Pune - 411 018.
Tel.: 020-2710 1000 Fax : 020-2742 6000

Chinchwad :
Power Projects Division
D-II Block, MIDC Chinchwad,
Pune - 411 019.
Tel.: 020-2740 9100 Fax : 020-2747 0890

Khandala :
Energy Pumps Division
A1, MIDC Khandala Phase II,
Village Kesurdi, Tal. Khandala,
Satara - 412 802.
Tel. : 02169 -246800

Coimbatore :
Valves Division
151, Mettupalayam Road,
NSN Palayam Post,
Coimbatore - 641 031.
Tel.: 0422-2468222, 2468547-9
Fax : 0422-2468232

Sinnar :
Standard Pumps Division
Plot No. E-3 & E-4, MIDC Sinnar,
Nashik - 422 113.
Tel.: 02551-230252 / 53, 229700
Fax : 02551-230254

Vambori :
Foundry Division
Vambori, Ahmednagar - 413 704.
Tel.: 02426-272534, 272550, 272463
Fax : 02426-272043

Regd. Office :
Office No. 601, Runwal R-Square,
L.B.S. Marg, Mulund (West),
Mumbai- 400 080,
Tel.: 022-2168 1300

Zonal Offices :

East :
30, Circus Avenue, 2nd Floor,
Kolkata - 700 017.
Tel.: 033-2287 0473, 2290 0117
Fax : 033-2287 0588

West :
Office No. 601, Runwal R-Square,
L.B.S. Marg, Mulund (West),
Mumbai- 400 080
Tel.: 022-2168 1300

North :
KSB House, A-96, Sector IV, NOIDA,
Dist. Gautam Budh Nagar - 201 301.
Tel.: 0120-2471 600
Fax : 0120-255 0567

South :
Guindy House, II Floor, # 92 Anna Salai,
Chennai - 600 032.
Tel.: 044-2235 2571-2, 2235 5673
Fax : 044-2235 2749

Service Stations :

Chennai :
6, Self-help Industrial Estate,
Keelkattalai, Near Keelkattalai -
Pallavaram Radial Road Signal junction,
Chennai 600 117
Tel. 044-22681159

Howrah :
Sadananda Industrial Estate
Howrah Amta Road, Balitikuri,
Bakultala
Howrah - 711 113, West Bengal

NOIDA :
KSB House, A-96, Sector IV, NOIDA,
Dist. Gautam Budh Nagar - 201 301.
Tel.: 0120-2471 600
Fax : 0120-255 0567

Odhav :
Shed No. 22, Gujarat Vepari
Mahamandal, Odhav,
Ahmedabad - 382 410.
Tel.: 079-2290 0372
Fax : 079-2290 0749

Branch Offices :

Ahmedabad :
Shed No. 22, Gujarat Vepari
Mahamandal, Odhav,
Ahmedabad - 382 410.
Tel.: 079-2290 0707, 2290 0717

Aurangabad :
Plot No. P-204, Shivshankar Colony,
Near Hotel Sayli,
Aurangabad - 431 005.
Tel.: 0240-235 1440, 234 2447
Fax : 0240-235 1440

Bangalore :
191, 1st Floor, West Of Chord Road,
II Stage, Bangalore - 560 086.
Tel.: 080-2349 1806, 2349 3925
Fax : 080-2349 6036

Baroda :
4-B, Ramkrishna Chamber,
Productivity Road, Baroda - 390 005.
Tel.: 0265-233 0532, 233 3226
Fax : 0265-235 0002

Bhubaneswar :
N5/39, 1st Floor, IRC Village, Nayapalli,
Bhubaneswar - 751 015.
Tel.: 0674-255 8497
Fax : 0674-255 8499

Chandigarh :
SCO - 189, 2nd Floor, Sector - 7C,
Chandigarh - 160 019.
Tel. / Fax : 0172-279 0072, 279 0062

Indore :
Office No 104, 1st Floor, Fortune
Ambience, 4/2 South Tukogunj
Indore - 452001
Tel.: 0731- 4216704, 4216705

Jaipur :
Anjali Chambers, 2nd Floor, Block C,
10, Rajbhawan Road, Civil Lines,
Jaipur - 302 001.
Tel.: 0141-222 4554, 222 4904
Fax : 0141-222 4904

Jamshedpur :
Flat No: 3/1, 3rd Floor, Plot No: 20,
Road No: 2, Sonari West Layout,
Jamshedpur - 831011.
Tel.: 0657-231 4012, 231 4011
Fax : 0657-231 7128

Lucknow :
309, Chintels House, 16, Station Road,
Lucknow - 226 001.
Tel.: 0522-263 5203, 263 5597
Fax : 0522-263 5597

Mumbai :
Office No. 601, Runwal R-Square,
L.B.S. Marg, Mulund (West),
Mumbai- 400 080
Tel.: 022-2168 1300

Nagpur :
203, Suryakiran Complex, Bajaj Nagar,
Nagpur - 440 010.
Tel.: 0712-223 6889, 222 9148
Fax : 0712-222 9148

Pune :
Mumbai-Pune Road, Pimpri,
Pune - 411 018.
Tel.: 020-2710 1000 Fax : 020-2742 6000

Raipur :
1st floor, E-5, Sector-5, Devender Nagar,
Raipur, Chhattisgarh - 492009
Tel.: 0771-258 3658, 258 3921
Fax : 0771-258 3921

Secunderabad :
D. No. 12-13-197, 198,
Flat No. 103 & 104, 1st Floor,
Pavani Anusuya Towers, Tarnaka,
Secunderabad - 500 017.
Tel.: 040-2700 1724, 2700 3696
Fax : 040-2700 1725

Thrissur :
4/227-4, Eravath Lane,
East Fort.P.O., Thrissur - 680005
Tel.: 0487 6065657



KSB Limited

Mumbai-Pune Road, Pimpri, Pune 411 018.
Tel.: +9120 2710 1000 Fax : +91 20 2742 6000 www.ksbindia.co.in